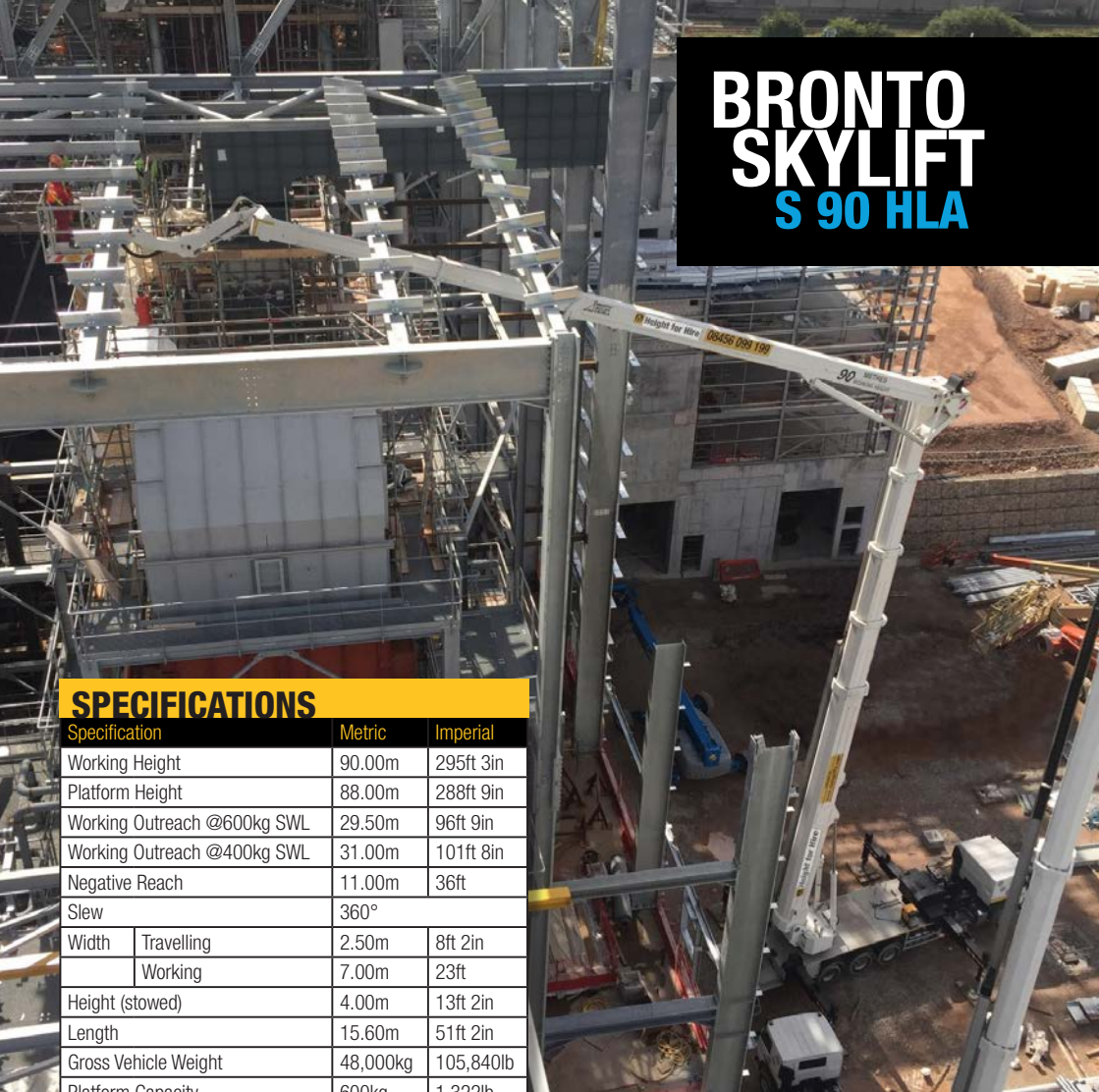


# BRONTO SKYLIFT S 90 HLA



## SPECIFICATIONS

Specification	Metric	Imperial
Working Height	90.00m	295ft 3in
Platform Height	88.00m	288ft 9in
Working Outreach @600kg SWL	29.50m	96ft 9in
Working Outreach @400kg SWL	31.00m	101ft 8in
Negative Reach	11.00m	36ft
Slew	360°	
Width	Travelling	2.50m / 8ft 2in
	Working	7.00m / 23ft
Height (stowed)	4.00m	13ft 2in
Length	15.60m	51ft 2in
Gross Vehicle Weight	48,000kg	105,840lb
Platform Capacity	600kg	1,322lb
Platform Size (Extendable)	2.50m - 3.70m x 1.05m	8ft 3in - 12ft 2in x 3ft 5in
Outrigger Spreader Pad	950mm ø	37in ø

## FLOOR LOADINGS

Max. Ground Pressure using Outrigger Spreader Pad	3.93kg/cm <sup>2</sup>	385.71kN/m <sup>2</sup>
---	------------------------	-------------------------



**IDEAL FOR**

- Wind farms
- Inner city and outreach work
- Bill posting
- Oil refinery work/shutdowns
- Crane inspections

# 90m

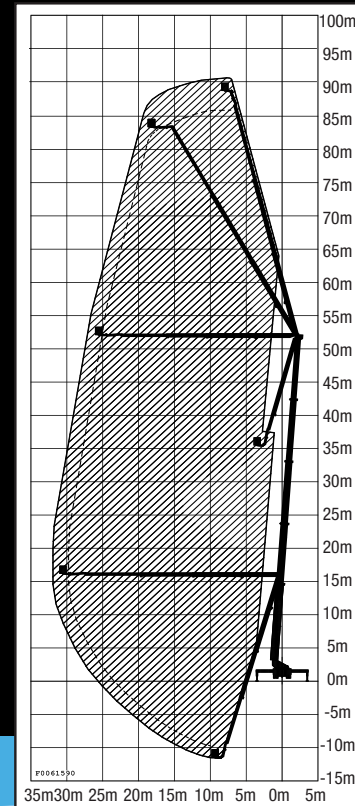
## CASE STUDY

**NATURE OF JOB:**  
Blade maintenance on wind turbine.

**REASON FOR CHOOSING THIS MACHINE:**  
High working height, large platform capacity and extendable platform, expert operator.

**CHALLENGE:**  
Technicians needed to carry out blade maintenance at heights up to 75m.

**EQUIPMENT:**  
Bronto S 90 HLA



## SOLUTION

Blade Technicians had to access all three blades on a single turbine in one day to carry out repairs and maintenance at working heights of up to 75m. Our skilled operator used the Bronto S 90 HLA to position the blade technicians at varying heights around each blade to carry out the repairs and maintenance work, safely and effectively.



The quick and easy set up of the truck mount, along with the skill of the operator, allowed the technicians to inspect and repair all three blades on the turbine in one day, minimising the lost production for the turbine owner.



- Max Jack force 270KN.
- Point load with standard pads 750mm 950mm=3.8kg/cmsq.
- Point load with 4xsleepers under standard pads 2.3kg/cmsq

BRONTO SKYLIFT S 90 HLA