

# BRONTO SKYLIFT S 35 EM



## SPECIFICATIONS

Specification	Metric	Imperial
Working Height	35.00m	114ft 10in
Platform Height	33.00m	108ft 3in
Working Outreach @120kg SWL	30m	98ft 5in
Working Outreach @450kg SWL	25m	82ft
Slew	plus/-90 deg	
Width	Travelling	2.5m / 8ft 2in
	Working	6.0m / 19ft 8in
Height (stowed)	3.7m	12ft 2in
Length	9.50m	31ft 2in
Gross Vehicle Weight	18,000kg	39,683lb
Platform Capacity	500kg	1102lb
Platform Size	0.9m x 2.40m	2ft 11in x 7ft 10in
	650mm x 650mm x 50mm	26in x 26in x 2in
Outrigger Spreader Pad	650mm x 650mm x 50mm	26in x 26in x 2in

## FLOOR LOADINGS

Max. Ground Pressure using Outrigger Spreader Pad	2.91kg/cm <sup>2</sup>	285.71kN/m <sup>2</sup>
---	------------------------	-------------------------



# 35m

## CASE STUDY

**NATURE OF JOB:**  
City Centre Window Cleaning

**REASON FOR CHOOSING THIS MACHINE:**  
Good outreach on a compact chassis, variable jacking, operator

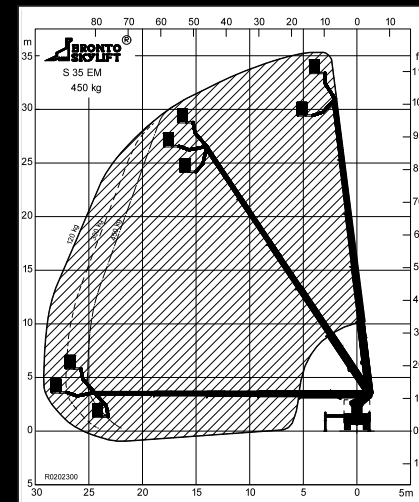
**CHALLENGE:**  
Difficult access and restricted set up space on a narrow road beside a wall. Road closure involved so limited work window.

**EQUIPMENT:**  
Equipment: Bronto S 35 EM

## SOLUTION



Our customer had to access windows on a building with one façade located a narrow road. To overcome the challenges of setting up on a narrow road beside a wall, our skilled operator was able to use the variable jacking to ensure safe set up of the machine which also allowed for optimal outreach. As the machine is compact and easy to set up, our operator was able to safely and efficiently set up in various locations to allow for access to different aspects of the building. Because of the skill of the operator and the efficiency of the machine, our customer was able to complete the job in the time allocated.



BRONTO SKYLIFT S 35 EM